



FLAT SPRAY NOZZLE F

With the flat spray nozzle F, uniform liquid distribution is achieved over an area. The flat spray nozzle finds its application wherever a strong spray is required. It is universally suitable for a variety of applications. Its spray pattern is characterized by a linear, narrow rectangular shape. In comparison to the FE model, the stream direction in the spray axis can be re-adjusted at any time without much effort. A change in capacity can be gained by simple replacement of the nozzle insert.

STANDARD – SPRAY ANGLE

60°, 90°, 120°
other angles on request



POSSIBLE APPLICATIONS

spraying and cleaning on moving parts
cleaning systems
dust control
sprinkler systems
test facilities
washing systems

FIELD OF APPLICATION

steel production
food industry
chemistry
pharma
petrochemistry
energy technology

AVAILABLE IN THE FOLLOWING MATERIALS

Stainless Steel

1.4305 (X8 CrNiS 18-9)
1.4435 (X2 CrNiMo 18-14-3)

Plastics

PVC
PTFE with glass fibers
POM
PP

(polyvinyl chloride)
(polytetrafluorethylene)
(polyoxymethylene)
(polypropylene)

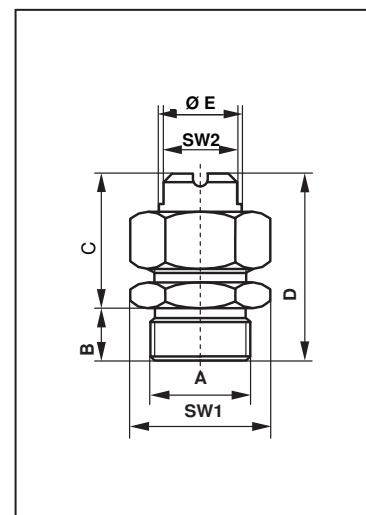
Non-ferrous material

brass

other material on request

DIMENSIONS

Type	A	B	C	D	Ø E	SW1	SW2
		mm	mm	mm	mm	mm	mm
F 02	R1/4"	9	25.5	34.5	12.5	22	10
F 03	R3/8"	10	25.5	35.5	12.5	22	10
F 04	R1/2"	13	32.5	45.5	16	27	14
F 05	R3/4"	15	36.5	51.5	20	35/36	17
F 06	R1"	17	44.5	61.5	26.5	40/41	24



Jato-Düsenbau AG

Täschmattstrasse 23, CH-6015 Luzern, Switzerland, Tel: +41 41 269 88 30 Fax: +41 41 269 88 31 www.jato.ch info@jato.ch

VER.03/16



FLAT SPRAY NOZZLE F

CAPACITY CHART OF FLAT SPRAY NOZZLE TYPE F

capacities in l/min of water by following pressures

type	thread	1 bar	2 bar	3 bar	4 bar (Test pressure)	6 bar	8 bar	10 bar
F 02	R1/4"			0.20	0.23	0.28	0.33	0.36
		0.27	0.38	0.47	0.54	0.66	0.76	0.85
		0.40	0.57	0.69	0.80	0.98	1.13	1.26
		0.60	0.85	1.04	1.20	1.47	1.70	1.90
		0.85	1.20	1.47	1.70	2.10	2.40	2.70
		1.20	1.70	2.10	2.40	2.95	3.40	3.80
		1.50	2.10	2.60	3.00	3.70	4.20	4.70
		1.80	2.55	3.20	3.60	4.40	5.10	5.70
		2.50	3.50	4.30	5.00	6.10	7.10	7.90
		4.00	5.70	6.90	8.00	9.80	11.30	12.60
		5.20	7.30	9.00	10.40	12.70	14.70	16.50
6.30	8.80	10.80	12.50	15.30	17.70	19.80		
F 03	R3/8"			0.20	0.23	0.28	0.33	0.36
		0.27	0.38	0.47	0.54	0.66	0.76	0.85
		0.40	0.57	0.69	0.80	0.98	1.13	1.26
		0.60	0.85	1.04	1.20	1.47	1.70	1.90
		0.85	1.20	1.47	1.70	2.10	2.40	2.70
		1.20	1.70	2.10	2.40	2.95	3.40	3.80
		1.50	2.10	2.60	3.00	3.70	4.20	4.70
		1.80	2.55	3.20	3.60	4.40	5.10	5.70
		2.50	3.50	4.30	5.00	6.10	7.10	7.90
		4.00	5.70	6.90	8.00	9.80	11.30	12.60
		5.20	7.30	9.00	10.40	12.70	14.70	16.50
		6.30	8.80	10.80	12.50	15.30	17.70	19.80
		7.00	9.90	12.10	14.00	17.20	19.80	22.00
		8.80	12.40	15.20	17.50	21.50	24.80	27.70
		10.00	14.10	17.30	20.00	24.50	28.30	31.60
11.50	16.30	19.90	23.00	28.20	32.50	36.40		

other capacities on request

FOR ORDERING WE NEED FOLLOWING INFORMATIONS

Field of application

medium to spray (viscosity)
fitting position / spray distance nozzle – spray area
temperature range
frequency range

Nozzle specification

type of material
desired spray angle
nozzle type
connection thread
desired capacity (l/min, l/h)
operating pressure (bar)

Jato-Düsenbau AG

Täschmattstrasse 23, CH-6015 Luzern, Switzerland, Tel: +41 41 269 88 30 Fax: +41 41 269 88 31 www.jato.ch info@jato.ch

VER.03/16



FLAT SPRAY NOZZLE F

CAPACITY CHART OF FLAT SPRAY NOZZLE TYPE F

capacities in l/min of water by following pressures

type	thread	1bar	2bar	3bar	4 bar (Test pressure)	6bar	8bar	10 bar
F 04	R1/2"	7.00	9.90	12.10	14.00	17.20	19.80	22.00
		8.80	12.40	15.20	17.50	21.50	24.80	27.70
		10.00	14.10	17.30	20.00	24.50	28.30	31.60
		11.50	16.30	19.90	23.00	28.20	32.50	36.40
		14.50	20.50	25.00	29.00	35.50	41.00	46.00
		18.50	26.20	32.00	37.00	45.30	52.50	58.50
		23.50	33.30	41.00	47.00	58.00	66.50	74.00
F 05	R3/4"	11.50	16.30	19.90	23.00	28.20	32.50	36.40
		14.50	20.50	25.00	29.00	35.50	41.00	46.00
		18.50	26.20	32.00	37.00	45.30	52.50	58.50
		23.50	33.30	41.00	47.00	58.00	66.50	74.00
		30.00	42.50	52.00	60.00	73.50	85.00	95.00
		35.00	49.50	60.50	70.00	85.50	99.00	111.00
		40.00	56.50	69.50	80.00	98.00	113.00	127.00
F 06	R1"	11.50	16.30	19.90	23.00	28.20	32.50	36.40
		14.50	20.50	25.00	29.00	35.50	41.00	46.00
		18.50	26.20	32.00	37.00	45.30	52.50	58.50
		23.50	33.30	41.00	47.00	58.00	66.50	74.00
		30.00	42.50	52.00	60.00	73.50	85.00	95.00
		35.00	49.50	60.50	70.00	85.50	99.00	111.00
		40.00	56.50	69.50	80.00	98.00	113.00	127.00
		58.00	82.00	101.00	116.00	142.00	164.00	183.00
	75.00	106.00	130.00	150.00	184.00	212.00	237.00	

other capacities on request

FOR ORDERING WE NEED FOLLOWING INFORMATIONS

Field of application

medium to spray (viscosity)
 fitting position/spray distance nozzle – spray area
 temperature range
 frequency range

Nozzle specification

type of material
 desired spray angle
 nozzle type
 connection thread
 desired capacity (l/min; l/h)
 operating pressure (bar)

Jato-Düsenbau AG

Täschmattstrasse 23, CH-6015 Luzern, Switzerland, Tel: +41 41 269 88 30 Fax: +41 41 269 88 31 www.jato.ch info@jato.ch

VER.03/16