

ECCENTRIC SPRAY NOZZLE

The eccentric spray nozzle is designed without the nozzle insert. Thus, virtually clog-free and excellent for the atomization of liquids with impurities such as industrial water, or viscose solutions such as tar, sludge and liquids with suspended solids. It is suitable for applications with low nozzle pressure.

STANDARD – SPRAY ANGLE

60°, 90°, 120°
other angles on request.



POSSIBLE APPLICATIONS

tank cooling
foam and dust control

treatment plants

AVAILABLE IN THE FOLLOWING MATERIALS

Brass

other materials on request

DIMENSIONS

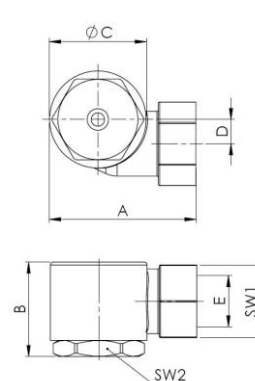
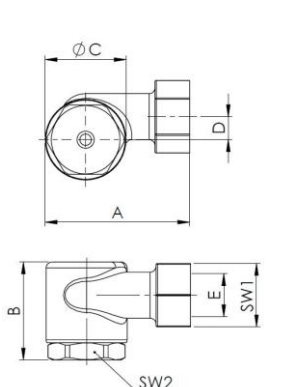
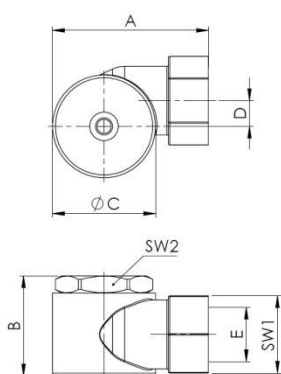
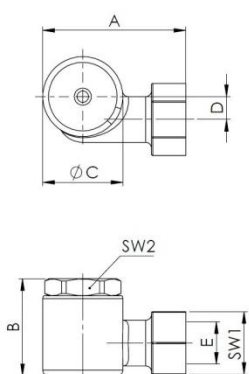
| Typ | A mm | B mm | ØC mm | D mm | E | SW1 mm | SW2 mm |
|------------------|---------|---------|----------|---------|-------|-----------|-----------|
| D135 | | | | | | | |
| D135 special top | 50 | 34 | 28 | 8 | R3/8" | 22 | 24 |
| D454 | | | | | | | |
| D454 special top | 54.5 | 35 | 36 | 9 | R1/2" | 27 | 30 |

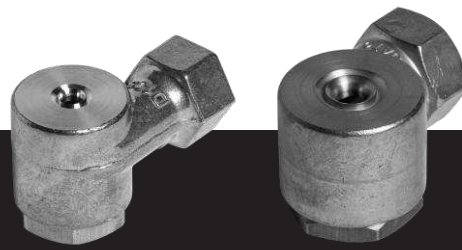
D135

D454

D135 special top
(hollow cone only)

D454 special top
(hollow cone only)





ECCENTRIC SPRAY NOZZLE

CAPACITY CHART OF ECCENTRIC SPRAY NOZZLE

capacities in l/min of water by following pressures

| Typ | thread | 1 bar | 2 bar | 3 bar | 4 bar (test pressure) | 6 bar | 8 bar | 10 bar |
|-------|---------|-------|-------|-------|--------------------------|-------|-------|--------|
| D 135 | R 3/8" | 1.20 | 1.70 | 2.10 | 2.40 | 2.95 | 3.40 | 3.80 |
| | | 1.50 | 2.10 | 2.60 | 3.00 | 3.70 | 4.20 | 4.70 |
| | | 1.80 | 2.55 | 3.20 | 3.60 | 4.40 | 5.10 | 5.70 |
| | | 2.50 | 3.50 | 4.30 | 5.00 | 6.10 | 7.10 | 7.90 |
| | | 4.00 | 5.70 | 6.90 | 8.00 | 9.80 | 11.30 | 12.60 |
| | | 5.20 | 7.30 | 9.00 | 10.40 | 12.70 | 14.70 | 16.50 |
| | | 6.30 | 8.80 | 10.80 | 12.50 | 15.30 | 17.70 | 19.80 |
| | | 7.00 | 9.90 | 12.10 | 14.00 | 17.20 | 19.80 | 22.00 |
| | | 8.80 | 12.40 | 15.20 | 17.50 | 21.50 | 24.80 | 27.70 |
| | | 10.00 | 14.10 | 17.30 | 20.00 | 24.50 | 28.30 | 31.60 |
| D 454 | R 1/2 " | 11.50 | 16.30 | 19.90 | 23.00 | 28.20 | 32.50 | 36.40 |
| | | 7.00 | 9.90 | 12.10 | 14.00 | 17.20 | 19.80 | 22.00 |
| | | 8.80 | 12.40 | 15.20 | 17.50 | 21.50 | 24.80 | 27.70 |
| | | 10.00 | 14.10 | 17.30 | 20.00 | 24.50 | 28.30 | 31.60 |
| | | 11.50 | 16.30 | 19.90 | 23.00 | 28.20 | 32.50 | 36.40 |
| | | 14.50 | 20.50 | 25.00 | 29.00 | 35.50 | 41.00 | 46.00 |
| | | 18.50 | 26.20 | 32.00 | 37.00 | 45.30 | 52.50 | 58.50 |
| | | 23.50 | 33.30 | 41.00 | 47.00 | 58.00 | 66.50 | 74.00 |

other capacities on request.

FOR ORDERING WE NEED FOLLOWING INFORMATION

Field of application

medium to spray (viscosity)
 fitting position / spray distance nozzle – spray area
 temperature range
 frequency range

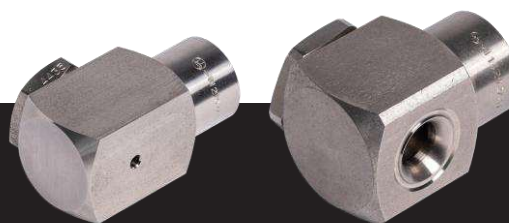
Nozzle specification

type of material
 desired spray angle
 nozzle type
 connection thread
 desired capacity (l/min, l/h)
 operating pressure (bar)

Jato-Düsenbau AG

Täschmattstrasse 23, CH-6015 Luzern, Schweiz, Tel: +41 41 269 88 30 Fax: +41 41 269 88 31 www.jato.ch info@jato.ch

VER.02/22



ECCENTRIC SPRAY NOZZLE

The eccentric spray nozzle is designed without the nozzle insert. Thus, virtually clog-free and excellent for the atomization of liquids with impurities such as industrial water, or viscose solutions such as tar, sludge and liquids with suspended solids. It is suitable for applications with low nozzle pressure.

STANDARD – SPRAY ANGLE

60°, 90°, 120°
other angles on request.



POSSIBLE APPLICATIONS

tank cooling
foam and dust control

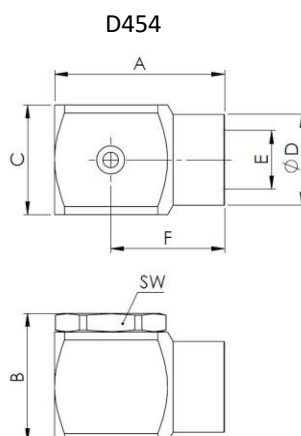
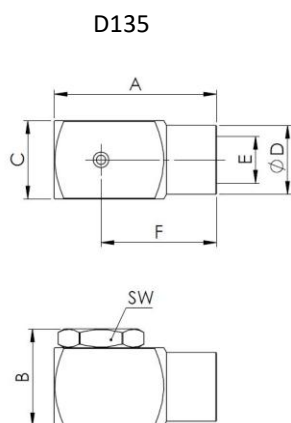
treatment plants

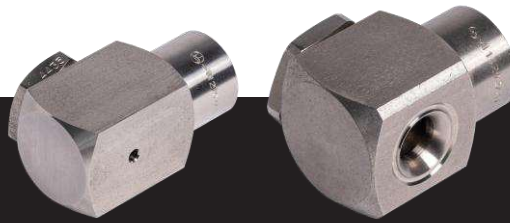
AVAILABLE IN THE FOLLOWING MATERIALS

Stainless steel, 1.4435 (X2 CrNiMo 18-14-3)

DIMENSIONS

| Type | A mm | B mm | C mm | ∅D mm | E | SW mm | F mm |
|------|---------|---------|---------|----------|-------|----------|---------|
| D135 | 52 | 31 | 25 | 22 | R3/8" | 24 | 37 |
| D454 | 54.5 | 41 | 35 | 29 | R1/2" | 32 | 36.5 |





ECCENTRIC SPRAY NOZZLE

CAPACITY CHART OF ECCENTRIC SPRAY NOZZLE

capacities in l/min of water by following pressures

| type | thread | 1 bar | 2 bar | 3 bar | 4 bar (test pressure) | 6 bar | 8 bar | 10 bar |
|-------|---------|-------|-------|-------|--------------------------|-------|-------|--------|
| D 135 | R3/8" | 1.20 | 1.70 | 2.10 | 2.40 | 2.95 | 3.40 | 3.80 |
| | | 1.50 | 2.10 | 2.60 | 3.00 | 3.70 | 4.20 | 4.70 |
| | | 1.80 | 2.55 | 3.20 | 3.60 | 4.40 | 5.10 | 5.70 |
| | | 2.50 | 3.50 | 4.30 | 5.00 | 6.10 | 7.10 | 7.90 |
| | | 4.00 | 5.70 | 6.90 | 8.00 | 9.80 | 11.30 | 12.60 |
| | | 5.20 | 7.30 | 9.00 | 10.40 | 12.70 | 14.70 | 16.50 |
| | | 6.30 | 8.80 | 10.80 | 12.50 | 15.30 | 17.70 | 19.80 |
| | | 7.00 | 9.90 | 12.10 | 14.00 | 17.20 | 19.80 | 22.00 |
| | | 8.80 | 12.40 | 15.20 | 17.50 | 21.50 | 24.80 | 27.70 |
| | | 10.00 | 14.10 | 17.30 | 20.00 | 24.50 | 28.30 | 31.60 |
| D 454 | R 1/2 " | 11.50 | 16.30 | 19.90 | 23.00 | 28.20 | 32.50 | 36.40 |
| | | 7.00 | 9.90 | 12.10 | 14.00 | 17.20 | 19.80 | 22.00 |
| | | 8.80 | 12.40 | 15.20 | 17.50 | 21.50 | 24.80 | 27.70 |
| | | 10.00 | 14.10 | 17.30 | 20.00 | 24.50 | 28.30 | 31.60 |
| | | 11.50 | 16.30 | 19.90 | 23.00 | 28.20 | 32.50 | 36.40 |
| | | 14.50 | 20.50 | 25.00 | 29.00 | 35.50 | 41.00 | 46.00 |
| | | 18.50 | 26.20 | 32.00 | 37.00 | 45.30 | 52.50 | 58.50 |
| | | 23.50 | 33.30 | 41.00 | 47.00 | 58.00 | 66.50 | 74.00 |

other capacities on request.

FOR ORDERING WE NEED FOLLOWING INFORMATION

Field of application

medium to spray (viscosity)
fitting position / spray distance nozzle – spray area
temperature range
frequency range

Nozzle specification

type of material
desired spray angle
nozzle type
connection thread
desired capacity (l/min, l/h)
operating pressure (bar)

Jato-Düsenbau AG

Täschmattstrasse 23, CH-6015 Luzern, Schweiz, Tel: +41 41 269 88 30 Fax: +41 41 269 88 31 www.jato.ch info@jato.ch

VER.02/22